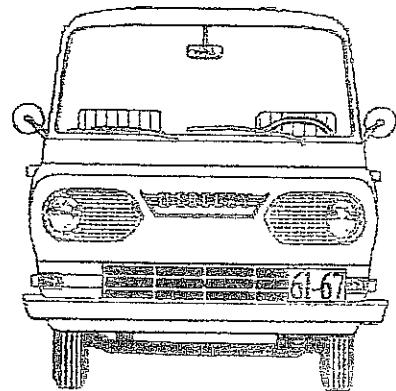


SEQ 59

Something Econoline Quarterly



DECEMBER 2007. For 15 years, 61-67 Econoline owners recorded as "EconO" meet attendees were automatically snail mailed an unsolicited free copy of the next SEQ Edition. Owners who once provided all the embossed characters from their VIN tag, were also placed on distribution for all four annual issues of SEQ. Regrettably, my cancer has progressed to the point where it will prevent me from either sponsoring and/or attending any future EconO meets or publishing future SEQ editions.

Happy Holidays!

MISCELLANEOUS INFO

Since this will be the last free issue of SEQ, and also be the last edition to be hosted by a 61-67 Econoline owner. For the next couple of months black and white back issues of SEQ will be available.

The sixth picture from the top of page 5707 in SEQ-57, depicts me and my youngest grandson (Brandon Anderson), who have been providing the free EconO West burgers, hot dogs & soft drinks, for the past two years. Regrettably, a two & 1/2 hour L.A. freeway traffic jam greatly delayed the "free chow line" last year. On January 30th, which will be his 18th birthday, I'll pass along my current 66 E-12 Falcon Club Wagon window van to Brandon. Due to concurrent school activities on the 12th of April, Brandon doesn't expect to be able to make it up to this year's EconO West meet.

FREEBIES

- Help finding and/or restoring, Nylint Econoline Toys.
- Help finding any parts needed for your 61-67 Econoline. Am seriously running out of room for all the good used (and some NOS) parts I have collected. *Don*

RENNER WI

► FOR SALE

► Die cast 356 aluminum NORS (new obsolete reproduction stock) Parking Brake Handle with thru shaft spring roll pin. As cast version with matt aluminum finish, \$25 each or two for \$40. With black appliance epoxy painted finish, \$30. With black appliance epoxy finish and white epoxy letters, \$35. With detailed high polished finish, \$40 each, or two for \$70. With detailed high polished finish and black imron paint, \$45. With detailed high polished finish and black imron paint and white imron letters, \$50. Also available in a variety of custom plated and/or anodized finishes. *Mike PRICHARD CA*

► LH & RH pair of new reproduction CIUB89_13132/3-A stainless steel front floor mat retainers, as shown on Ford Parts Illustration P-3472 (less the attaching sheet metal screws), \$25 per pair postpaid... *Ted JOHNS WA*

► Pair of new reproduction CIUB89_13102-B stainless steel floor mat retainers shown on P-3631 and mounted at side or rear cargo door opening (less the attaching sheet metal screws). \$25 postpaid, *Ted JOHNS*

WA

► Aluminum transmission mount adaptor that allows the more common 65-67 Econoline automatic transmission to be directly bolted into a 61-64 Econoline which has a "donut" style 61-64 tranny mount. \$60 + S&H *Sean O'DELL CA*

► Polyurathane spring shackle bushings. Complete set for both axels and the sway bar \$77, or \$32 per axle, and \$21 for the sway bar. Shipping is \$10 for the complete set, or \$5 for an individual axle or sway bar package. *Sean O'DELL CA*

► New headers for 240/300 engines that can only be installed in the stock 65-67 Econoline doghouse and which provides about 2" clearance. These headers feature a 6 into 1 divided collector plenum and only require replacing the original starter with a late model mini starter to clear. \$250 + S&H. *Sean O'DELL CA*

► New headers for 144/170/200/250 engines that

can be installed in the stock 61-67 Econoline doghouse and provide about 2" clearance. These headers feature a 6 into 1 divided collector plenum and only require replacing the original starter with a late model mini starter to clear. \$250 painted, \$360 ceramic coated, + S&H. *Sean O'DELL CA*

►D&D bolt on 61-67 Econoline front disc brake kits, which don't require any related machining, accept 14" wheels, are available in the following three versions:

- (1) **BASIC KIT**, \$269 +S&H for basic mounting brackets and related hardware.
- (2) **(2) MID-LEVEL KIT**, \$289 +S&H for mounting brackets, hardware, and rotors. In some cases total shipping costs can be reduced by locally purchasing new readily available off the shelf items need to complete the Basic and Mid Level kits.
- (3) **(3) COMPLETE KIT**, \$589 +S&H (with cheapest pads/calipers) or \$665 +S&H (with premium calipers), includes new mounting brackets, hardware, rotors, calipers, pads, hoses, and all other needed parts. *Dennis FARRIS OR*

2007 MEETS

On the 13th of October, 2007, John Horn held the farewell tour of the EconO Southeast meet (and the legendary spectacle of counterweight racing) at the restored Union Station Train Depot in Plant City FL. Present plans call for relocating the 2008 meet to a different FL location

SEQ'S RETURNED BY THE POST OFFICE

The following issues have been returned by the post office. Don't know if it's because I'd made a typo in the address or what.

Andy Gowin, 609 South Cedar

Avenue, Independence MO 64053
Takumi Saito, 1638 West 206th Street, Torrance CA 90501

John Deans, West 39 Street, Vancouver WA 98660

Ronnie Hunt, 154 Jack Berry Lane, Hot Springs AR 71913

Donald Lehmann Jr, 1643 Socrum Loop Road, Lakeland FL 33810

2007 EXCESS LITERATURE

I have an immense collection (well over 100,000 pages) of 61-67 Falcon/Econoline literature. Here is a very small sampling:

1961 FORD CAR FACTS (Dealer's Album) 100+b&w pages). Covers first Falcon Econoline Versions but not the Econoline Truck models described in the FORD TRUCK FACTS album.

1961 Press Information Folder (7 b&w pages & 5 b&w photos).

1961 five 8"x10" b&w photos of the Sep 1960 Ford Econoline World Premiere in Detroit's Cobo Hall.

1961 6 color pages, & 3 b&w pages, of 1961 Ford Truck Paint color Chips & specifications.

1961 (2 b&w pages) Ford Econoline Series Trucks and Accessories: Quick Price Facts.

1961 Econoline Operators Manual, U.S. Ford Econoline (tinted cover, 32 b&w pages)

61, U.S Oct, Dec, & 61 Can,

Oct. (color), CLUES To Successful Truck Operation.

1961 Ford Canadian Econoline Commercial Vehicles b&w Shop Manual.

1961 Ford U.S. Econoline & Falcon Club Wagon b&w Shop Manual.

1962 Ford U.S. Econoline & Falcon Club Wagon b&w Shop Manual Supplement.

1962-63 Ford CDN Econoline & Falcon Club Wagon b&w Shop Manual Supplement.

1964 Ford U.S. Econoline & Falcon Club Wagon b&w Shop Manual Supplement.

1964 Ford CDN Econoline & Falcon Club Wagon b&w Shop Manual Supplement.

1965 Ford U.S. Econoline b&w Shop Manual.

1965 Ford CDN Econoline b&w Shop Manual.

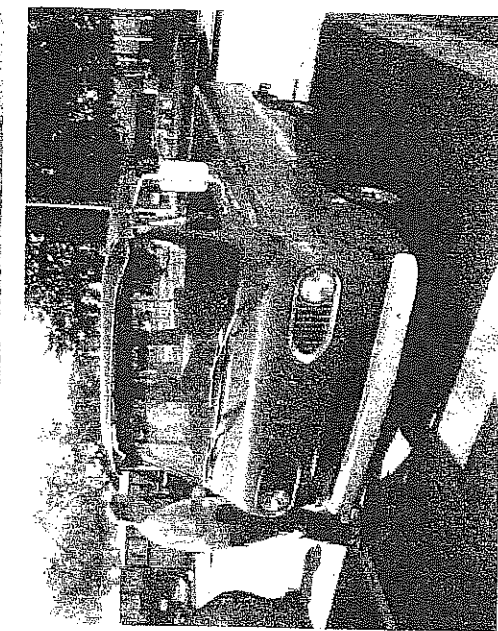
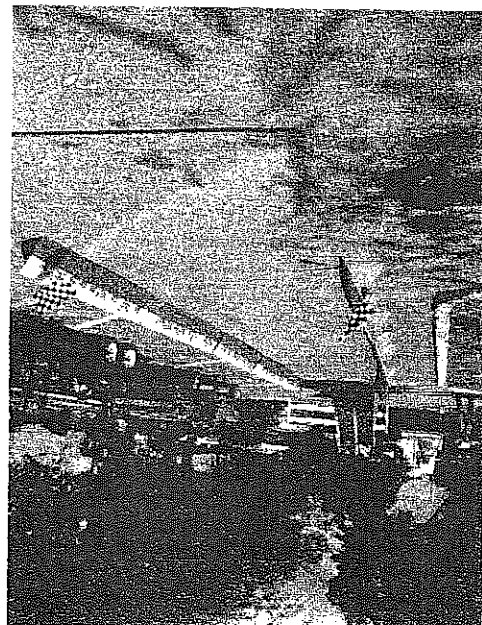
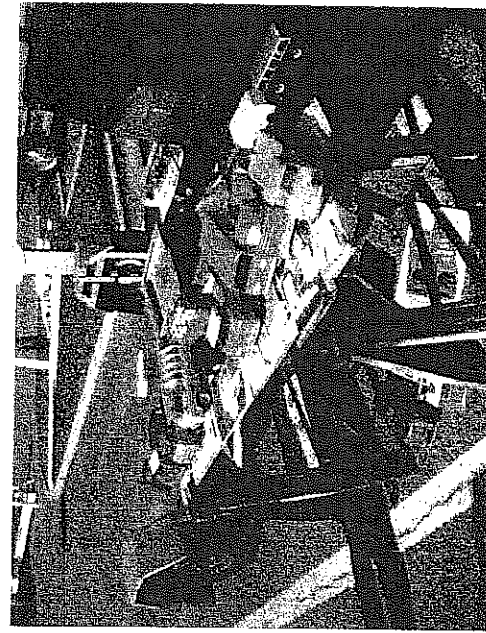
1966 Ford U.S. Falcon Club Wagon Econoline & Recreational Vehicle b&w Shop Manual.

1966 Ford CDN Falcon Club Wagon Econoline & Recreational Vehicle b&w Shop Manual

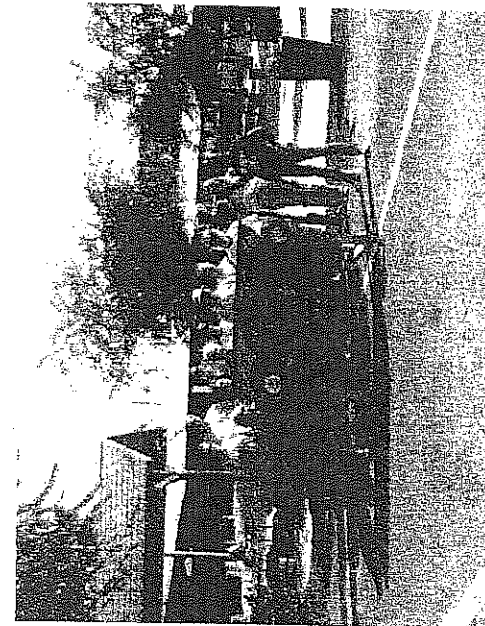
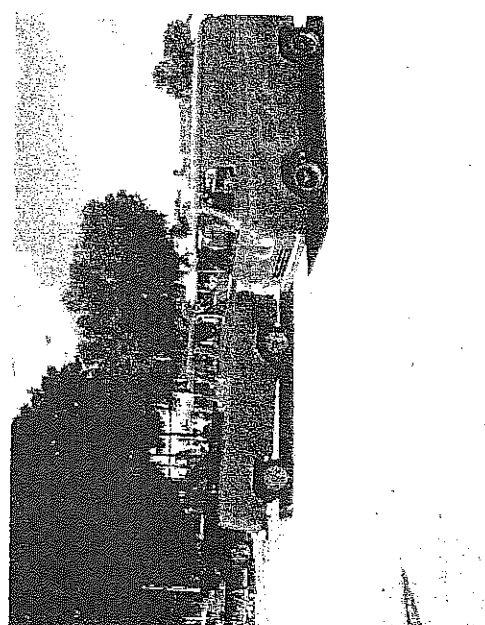
1967 U.S. Ford Bronco, Econoline and Recreational Vehicle b&w Shop Manual.

1967 FORD TRUCK FACTS

If you are internet impaired (i.e., lack a computer), and are interested in any Econoline literature. snail mail me ASAP since in a couple of months it will start being offered in e-bay auctions. Most 1961 items are also available in 1962-1967 versions. Both new & used U.S. & Canadian Ford Econoline Part Number catalogs are available.



ECONO SOUTHEAST
SATURDAY, OCTOBER 13, 2007
UNION STATION TRAIN DEPOT
PLANT CITY FL



For family travel or a complete vacation

GO TRAVEL WAGON

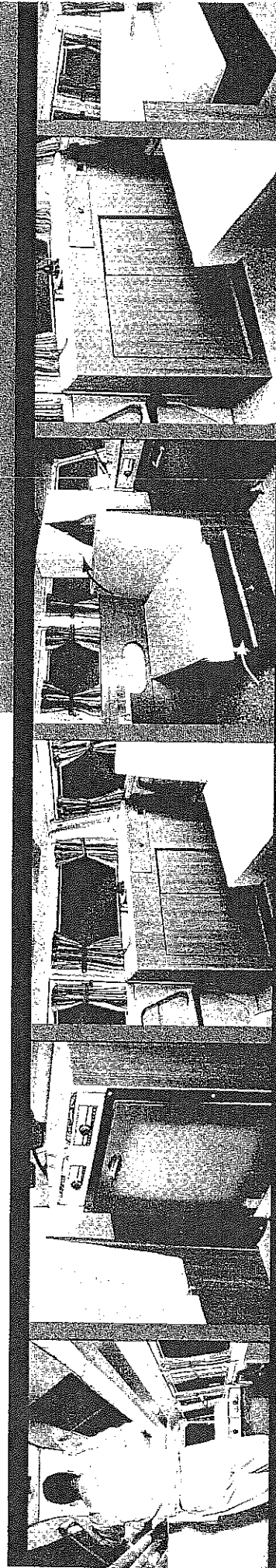
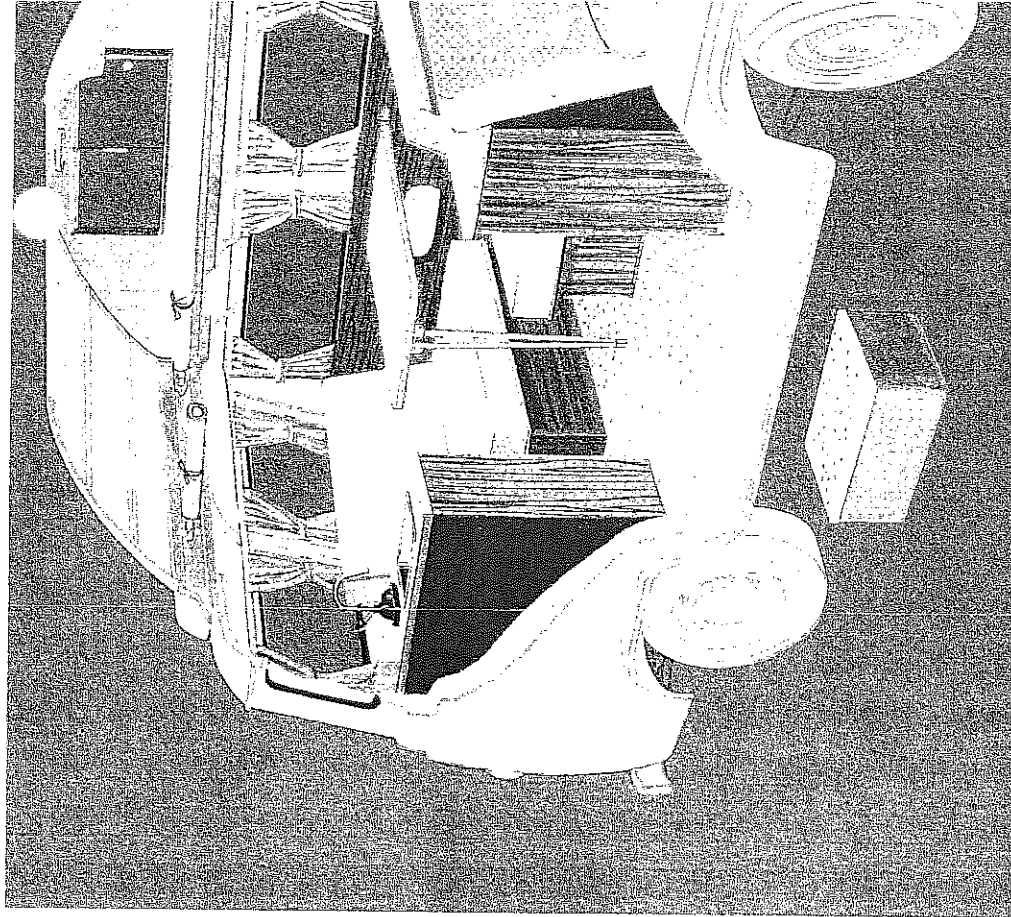
Forget about timetables, reservations and the expense of motels, hotels and restaurants. Here it is... America's most popular self-powered, self-contained camper, with everything for comfortable living... including the kitchen sink.

Your new Travel Wagon seats six, sleeps six. Six-footers can stand up in it. There's everything you want inside... a warm homelike appearance with beds, bunks, complete galley, lights, screens, shades (optional drapes), lockers, dust-proof wardrobe and toilet facilities. It's all factory-furnished and factory-guaranteed.

You get full-time use from your Travel Wagon, too. It does double duty as a station wagon. When you're not on the go just for the fun of it, use it for shopping and family chauffeuring. See a Travel Wagon. Test drive it at your Ford Dealer's.

The self-powered, self-contained way to travel. Fact: Travel Wagons are licensed, insured, taxed and tolled as station wagons. And they're easily financed. You go everywhere that trucks, buses and trailers aren't allowed. Your Travel Wagon breezes in and out of traffic on a short 90-inch wheelbase, and you have no new tricks to master for backing, parking and braking. No hookups and extra connections to worry about, either.

Load her up! Ford Travel Wagons are ready to carry a half ton of your gear in a roomy 204 cubic feet of load space. You have an all-flat floor. Four-foot door openings curbside and rear give you easy, complete accessibility.



Flips up or down in two seconds. Travel Wagon's metal, theright top flips up in two seconds to make headroom for footers. Sliding screened doors in top add extra light

Complete galley. Includes legal, two-burner stove, sink with running water, large capacity water tank, formica-type work top space and icebox (12-volt electric/gas convertible refrigerator optional).

Plenty of "stowaway" space. Roomy lockers under both dinette seats, and heavy-duty, dust-free wardrobe bag. Wooden cabinets under sink have shelves and drawers for food storage and kitchen utensils.

Dinette double. Sturdy table with fold-down seats can be positioned for dining or sleeping. Available vinyl, plastic, card and coffee

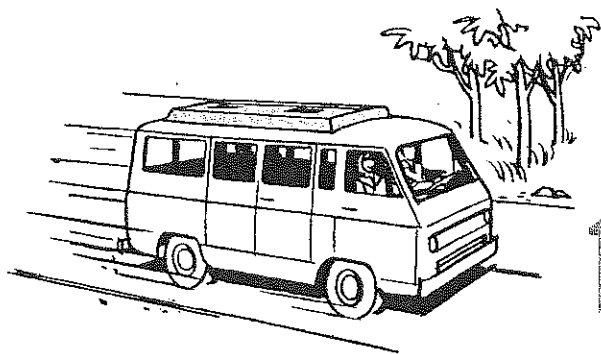
TRAVEL IS FUN

PUT ON **Turtle TOP** ...AND TRAVEL IN YOUR HOME

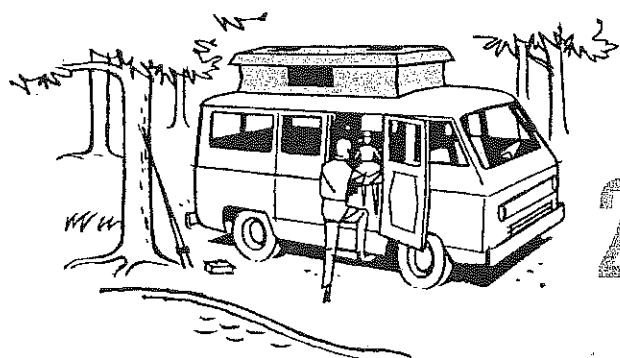


RECREATIONAL CONVERSION
FOR THE
FORD ECONOLINE WINDOW VAN
MANUFACTURED BY
WORK-N-PLAY DIV.
INDEPENDENT PROTECTION CO., INC.

TURTLE TOP



1 TRAVELING: Down the road you go with your Turtle Top safely latched and weather tight. Fiberglass white roof reflecting the sun... and four skylights shedding soft translucent light inside. And inside, you can move about more comfortably because the unique design has permanently increased your headroom by five inches—when the roof is down.



2 PARKED: Back in the woods or parked beside your favorite lake, you have only to release two safety latches and push up on the spring loaded roof. "Whoosh" and you have over six feet and two inches of headroom in the entire area (36" x 74") of the roof opening. Drop the screen closures and let the soft breezes move through.



FREE YOURSELF FROM THAT "CRAMPED-UP" FEELING WITH TURTLE TOP,

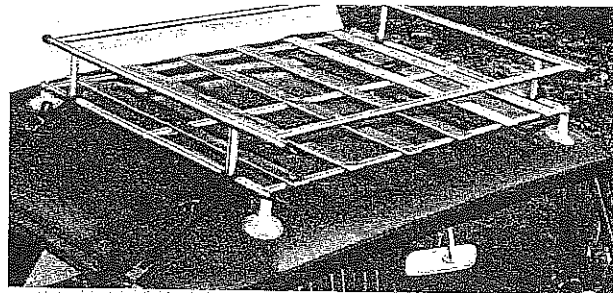
so easy to lift that you do it with a flip of the hand—even one end at a time if you choose. Both the top and lift mechanism are bolted securely to a heavy (14 ga.) steel channel roof frame which replaces the original roof bows and metal. Twenty-two bolts hold it to the rubber and felt seals making it watertight... The closure curtain between frame and roof is made of the very best "marine grade" vinyl

and nylon available; the fiberglass screens are sewn in place and open and close with Velcro*. You are truly protected under a Turtle Top... And an upper bunk is always available since it is anchored to one side of the roof frame and stores within the frame itself. Just unroll it and drop the outboard tube into its sockets and you have a 25" x 74" bunk with ample space for easy entry. Perfect for children, it will easily accommodate a two hundred pound man in comfort.

Turtle TOP[®]

ACCESSORIES

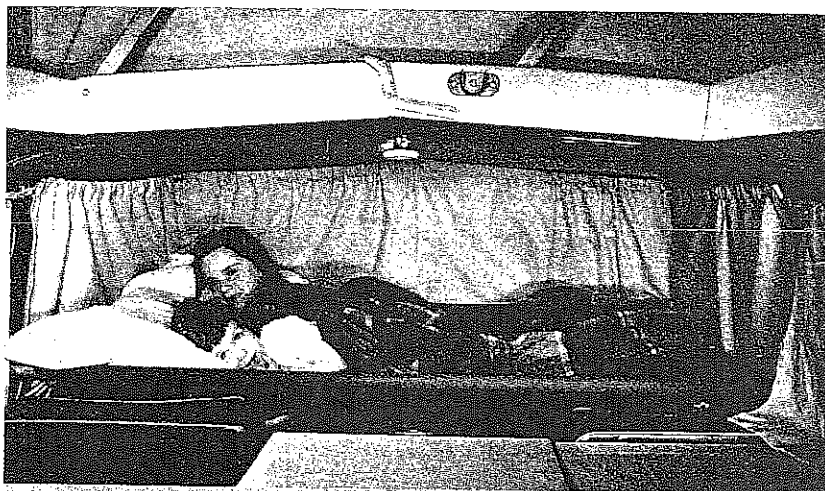
These illustrations show only a few of the accessories available for your traveling comfort and pleasure. Each one has been designed or selected for use by the Turtle Top camper/owner. Other equipment and special options will be offered by your Ford dealer as they become available.



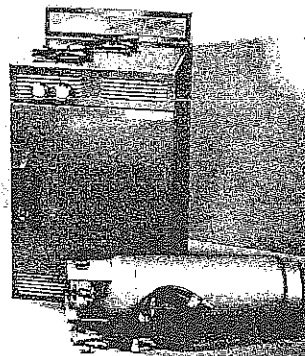
FRONT LUGGAGE RACK—4" high, 27-1/2" long, 40-3/4" wide (inside measurements). Includes suction cup mounts and anchor straps.



ADJUSTABLE AWNING—Stores inside vehicle in roof frame 72" x 82". Includes adjustable aluminum poles, nylon ties and metal stakes for use when poles are placed on ground.



FORWARD BUNK—If finding space for children is your problem, this 40" x 60" canvas bunk and drape combination will give you an additional easy-to-use sleeping compartment. All support tubes and canvas cover store quickly in the roof frame and are always available.



PROPANE REFRIGERATOR AND STOVE—Since vehicles vary in their interior dimensions, this is only one of the stove and refrigerator combinations available.

SPECIFICATIONS:

Maximum GVW: (lb.).....	*4350
Maximum Load: (lb.).....	1675
Maximum Loadspace: (cu. ft.).....	204
Axle, Front: Capacity (lb.).....	2050
Axle, Rear: Capacity (lb.).....	2300
Ratios (to 1)—Standard.....	3.50
Battery—54 plates—55 amp-hr.	
Brakes, Service: Size (in.)—	
Front.....	10 x 2.50
Rear.....	10 x 1.75

Brakes, Parking—Cable actuation of rear brakes	
Clutch: Dia. (in.)—	
Frictional Area (sq. in.).....	8.5-67.6
Cooling System: (Capacity (qt.).....	9.0
Fan No. of Blades—Dia. (in.).....	4-15
Optional w/144 Six, (Std. w/170 Six) —	
Extra cooling radiator	
Engine:**.....	101-hp, 170-cubic-inch Six
Fuel Tank: Capacity (gal.).....	14
Location.....	Under cargo floor
Generator:.....	30 amp-450 watt

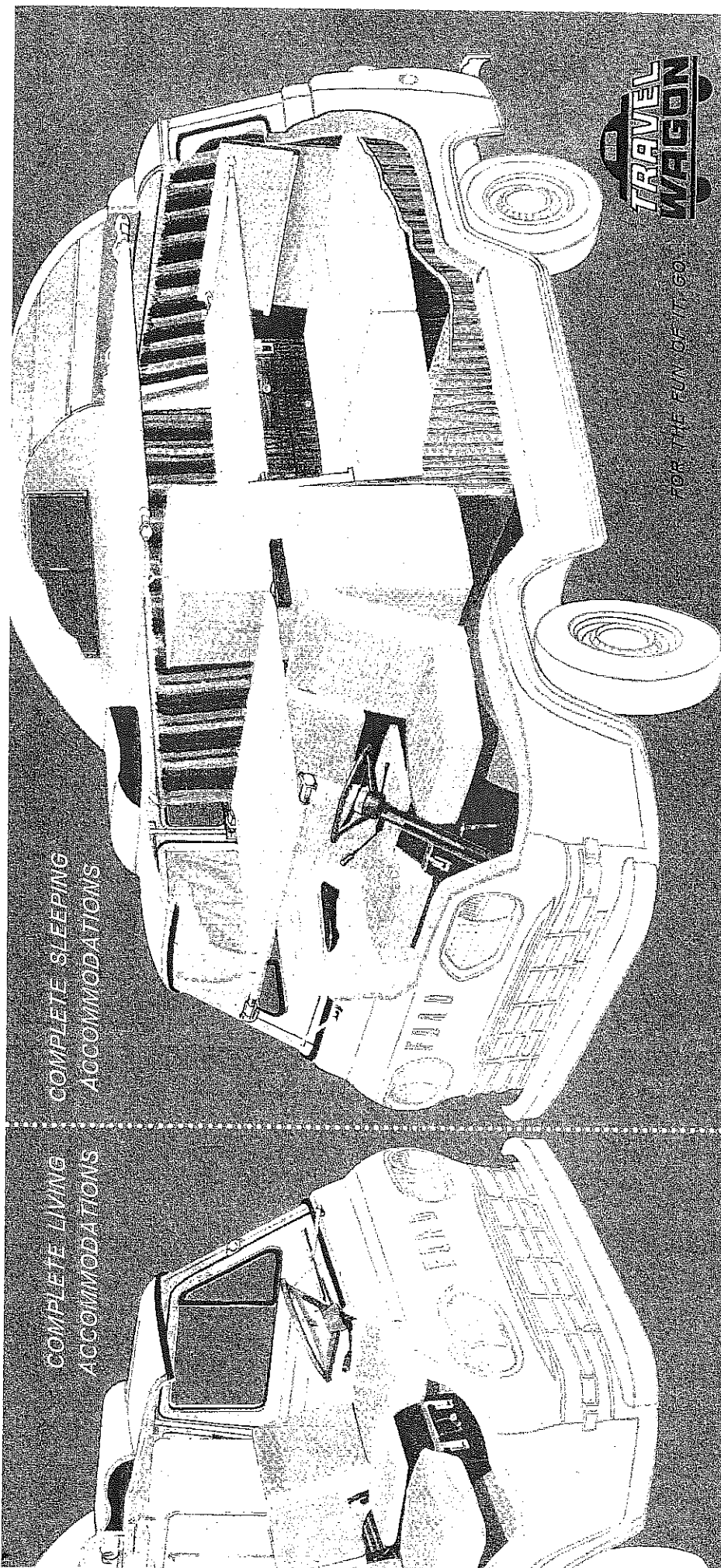
Shock Absorbers:	
Front and Rear. Direct-acting, telescopic	
Springs, Front: Capacity at pad (lb.)..	855
Size (in.)—No. of leaves..	48.4 x 2.25-5
Springs, Rear: Capacity at pad (lb.)..	1025
Size (in.)—No. of leaves..	47.62 x 2.25-5
Transmission: Synchro-Silent — 3-speed	
4-speed and automatic control—Steering	
column shift lever	
Tires: Tubeless.....	7.00 x 13 Extra Ply
Wheels: No.—Rim Size....	5-13 x 5-1/2J

*Requires 7.00 x 13 6PR tires
 **Optional 240 cubic inch six 150 H.P.

Turtle Top Travel Gear Conversions are also adaptable to the Ford SuperVan which is 18 inches longer than standard van.

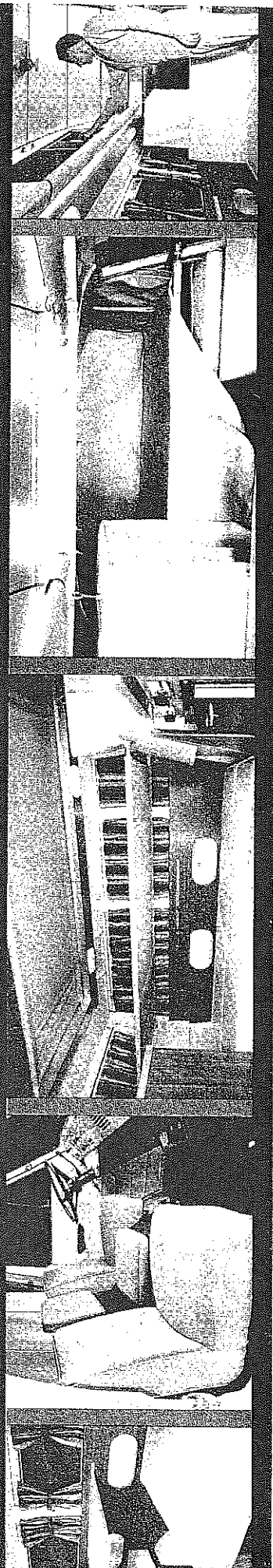
COMPLETE LIVING
ACCOMMODATIONS

COMPLETE SLEEPING
ACCOMMODATIONS



FOR THE FUN OF IT, GO.

TRAVEL
WAGON



Jr. driver's seat up front (optional). Vinyl-upholstered, easy-to-clean seat for a junior copilot offers change of pace from play in the dinette area.

Comfortable sleeping in complete privacy. Bunks and fold-up beds ready for sleeping or secured out of the way in minutes. Tot's bed can be completely partitioned off from cabin lights. Seating space available even after tot's bed is made up for the night.

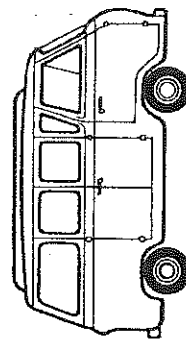
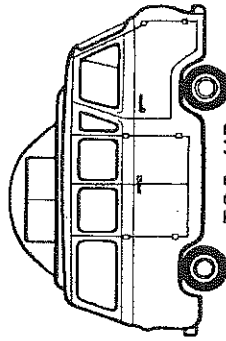
Heads Up. Even the six-foot stand with comfort in a Wagon. Yet, with top down wagon fits easily into a standard size garage.

TRAVEL WAGON

FORD
ECONOLINE
CONVERSION



ELEVATING TOP
FLIPS UP OR DOWN
IN 2 SECONDS FLAT



FOR THE FUN OF IT, GO...

**TRAVEL
WAGON**